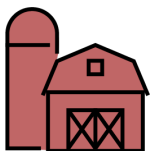


#LeanOnYourLandGrant

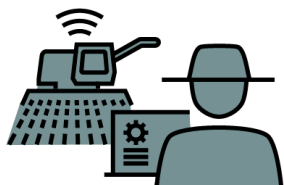
Ohio State University Extension Agriculture and Natural Resources

empowers Ohio's agriculture and natural resources communities, provides outreach and education based on unbiased research, and cultivates relationships to strengthen the economic viability and quality of life for Ohioans.



SMALL FARMS TEAM

1,011 *Small and Beginning Farm program participants.* These participants learned information in a variety of settings to use in their farm enterprises.



OHIO AGRABILITY PROGRAM

Works collaboratively with Opportunities for Ohioans with Disabilities resulting in referrals and **\$277,743** in assistive technology, equipment, worksite modifications and services.



2022 Ag Lender Education Team

137 ag lenders reached
7,352 farm clientele reached
\$3.4 billion financial portfolio



FARM OFFICE LIVE

Farm Office LIVE allows producers to receive farm management and ag and resource updates.

12 webinars held in 2022

389 participants and additional **222** accessing the online recordings.

FARM OFFICE WEBSITE:

74,362 users

95,730 sessions

165,795 views

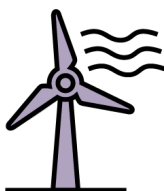
FARM OFFICE OHIO AG LAW BLOG:

42,996 views



MASTER GARDENER

157,879 Volunteer Hours
Economic impact of volunteer hours **\$4.7 million**



ENERGIZE OHIO

Energize Ohio website with resources for landowners and educational recordings had **77,072** views.



WATER QUALITY TEAM

Water Quality Wednesday webinar series reached

159 live viewers and **381** views on YouTube

Harmful Algal Bloom Research Initiative Project (HABRI). Field research to improve nitrogen management and understand water quality impacts when manure is applied.

624 acres in 10 counties with 101 water samples pulled.

NPS-IS (Non-Point Source Implementation Plans):

272,776 acres covered
7 counties.



eFIELDS

292 trials **130** partner farms
49 counties **68** industry farms

5,500 printed copies distributed
Reports accessed online from **40** US States and **74** Countries.



THE OHIO STATE UNIVERSITY

COLLEGE OF FOOD, AGRICULTURAL,
AND ENVIRONMENTAL SCIENCES

agmr.osu.edu

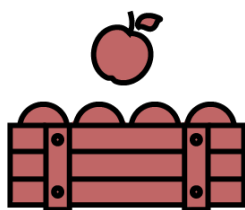
CFAES provides research and related educational programs to clientele on a nondiscriminatory basis. For more information, visit cfaesdiversity.osu.edu. For an accessible format of this publication, visit cfaes.osu.edu/accessibility.

#LeanOnYourLandGrant



OSU INCOME TAX SCHOOL FOR PROFESSIONALS

Attendees used knowledge
gained to complete
157,251 tax returns and
9,302 farm tax returns.



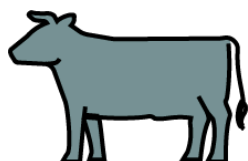
SPECIALTY CROP TEAM

OSU faculty received
14 grants totaling
\$1,767,338
to support outreach,
demonstration and research in
food safety, production and pest
management for Ohio fruit and
vegetable stakeholders.



CORN NEWSLETTER

Information used for management of
1.6 million Corn acres
3.2 million Soybean acres
For an economic impact for
Ohio of over
\$17 million annually.



BEEF TEAM

95,009 YouTube views
1,062,180 impressions
Top 5 State in Beef Quality
Assurance certifications



PESTICIDE APPLICATOR RECERTIFICATION

Private applicators recertified:
5,885 pesticide applicators
6,460 fertilizer applicators
Commercial Applicators:
3,836 recertified
by PSEP program



FARM STRESS

202 Mental Health First Aid
Providers trained
1,000 individuals completed
Farm Stress Certified Training



VITICULTURE TEAM

100 vineyard visits
700+ consultations provided to
growers via phone or email
21 vineyard site evaluations for
the 2022 Vineyard Expansion
Assistance Program
The new vineyard acreage is
estimated to add an annual impact
of about **\$600,000**.



A DAY IN THE WOODS

115 videos
People Reached **232,420**
69,367 minutes viewed



OHIO CERTIFIED VOLUNTEER NATURALIST PROGRAM

36,136 hours of volunteer
service
\$1,082,273 independent sector
value
8,374 hours of continuing
education reported by
640 Ohio Certified Volunteer
Naturalists



THE OHIO STATE UNIVERSITY

COLLEGE OF FOOD, AGRICULTURAL,
AND ENVIRONMENTAL SCIENCES

agnr.osu.edu

CFAES provides research and related educational programs to clientele on a nondiscriminatory basis. For more information, visit cfaesdiversity.osu.edu. For an accessible format of this publication, visit cfaes.osu.edu/accessibility.